

HOW TO SETUP CHINESE LANGUAGE IN WINDOWS 2000 ?

1) System and tool required:

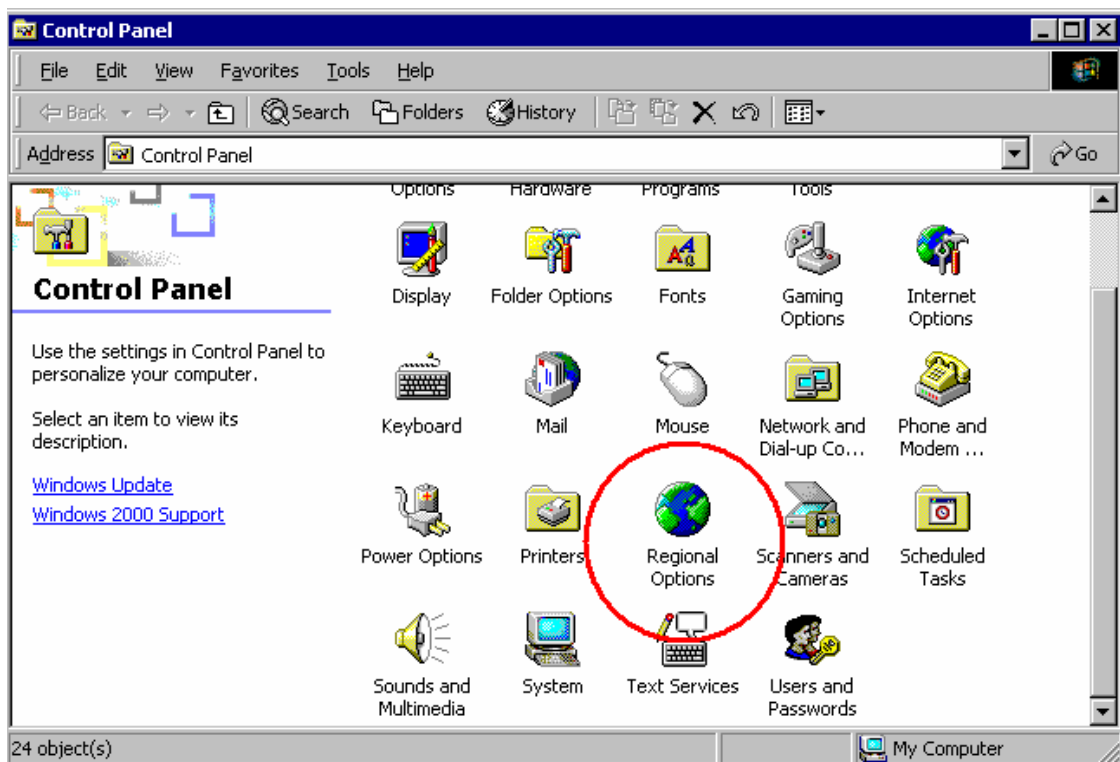
- Operating system : [Windows 2000](#)
- Type : [Professional](#)

Tan, for Windows 2000. You must have the CD of Windows 2000 as well during its installation, not like on Windows XP

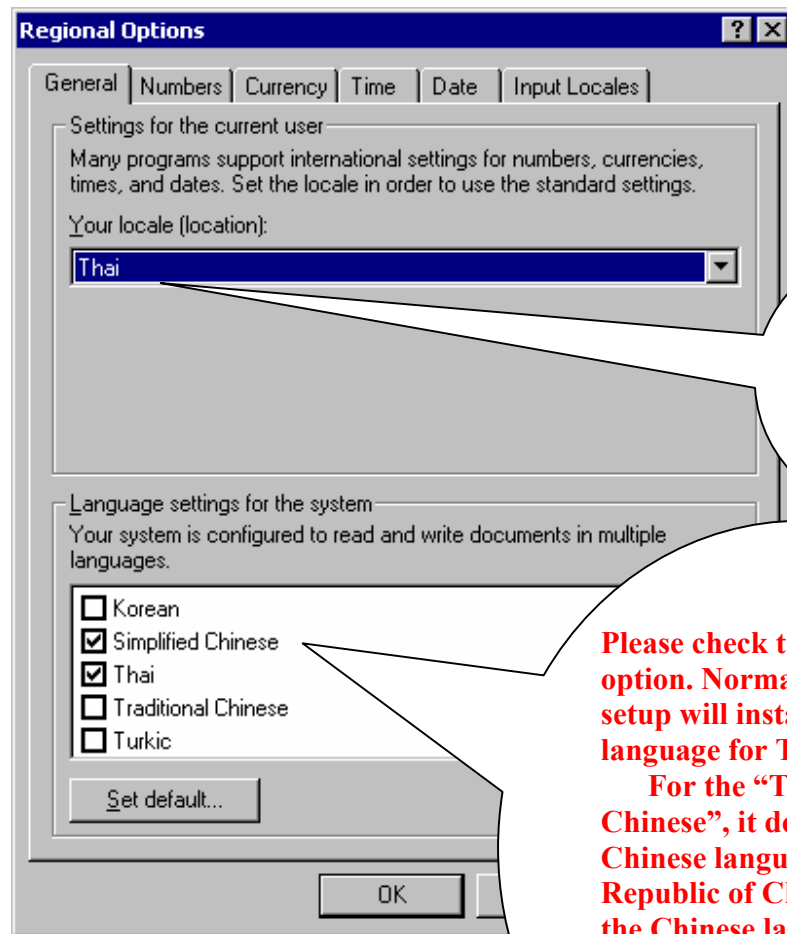
2) Setup Chinese Fonts:

2.1 Click [Start\Settings\Control Panel](#)

2.2 Double click on "[Regional Options](#)" icon, like the below figure.



2.3 Click on "[General](#)" tab.



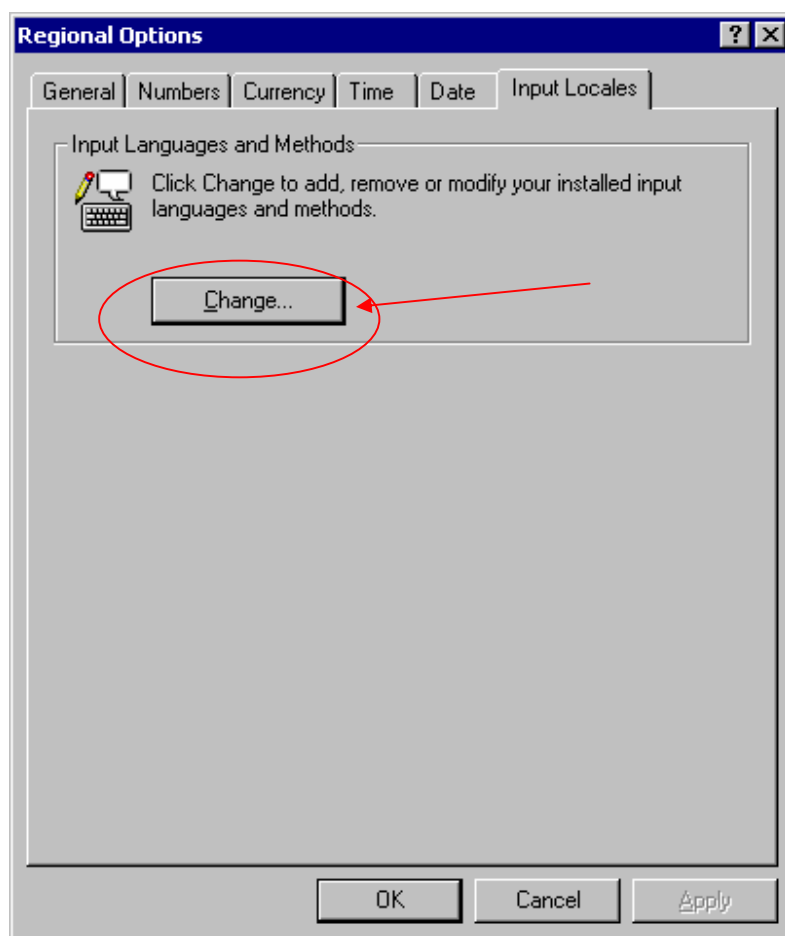
This is the default language for the current user.

Please check this additional option. Normally, the window setup will install only Thai language for Thai system.

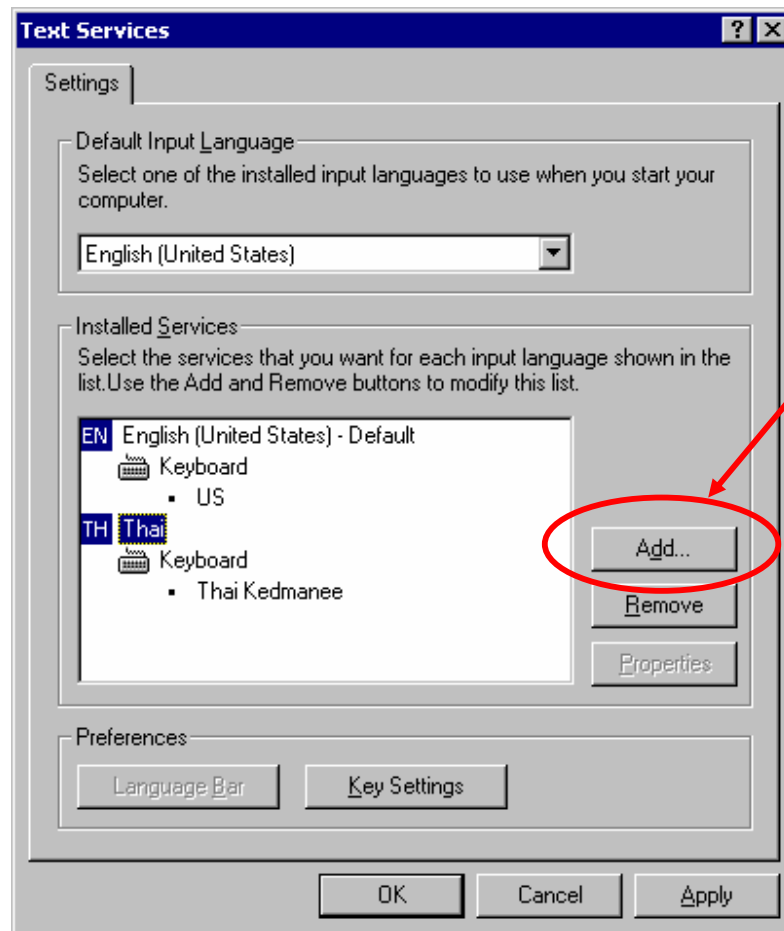
For the “Traditional Chinese”, it doesn’t have the Chinese language of People’s Republic of China. It has only the Chinese language for Hongkong, Singapore, Taiwan ...like these.

- 2.4 And then press “**Apply**” and “**OK**” button, or press only “**OK**”. However, the Windows will ask you to insert “**Windows 2000 CD**”. **If you don’t have any Windows 2000 CD, the installation won’t be able to install all additional language.** Therefore, you may ask your “IS-Information System” department for that CD. Actually, I think that your IS department won’t lend any CD for any person, **except** their guys or their team will install it for your request.

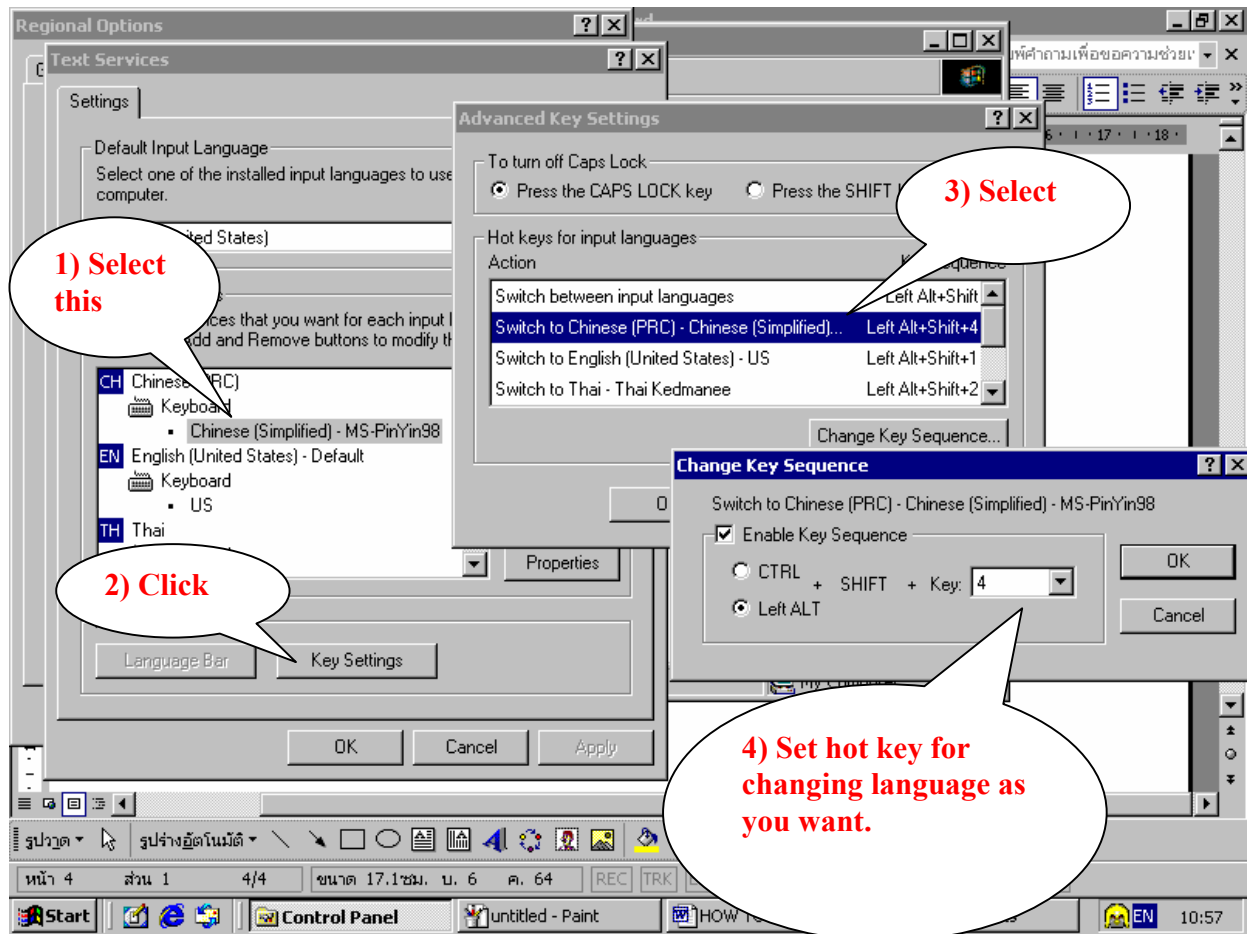
- 2.5 And then all necessary files will be transferred to your computer, after that the Windows will restart automatically.
- 2.6 If your “Windows 2000” CD is still in CD cassette, the computer will ask you to BOOT FROM CD by pressing ENTER button. You **shouldn't** press any key because now we are not installing the FULL Windows 2000, we only stall the additional language.
- 2.7 Once the Windows has reboot completely. Let's go to the “[Start\Settings\Control Panel\Regional Options\](#)” menu again.
- 2.8 Click on “[Input Locales](#)” tab, like the below figure, and then click on “[Change...](#)” button.



- 2.9 Click on “[Add...](#)” button to add other languages you want..na.

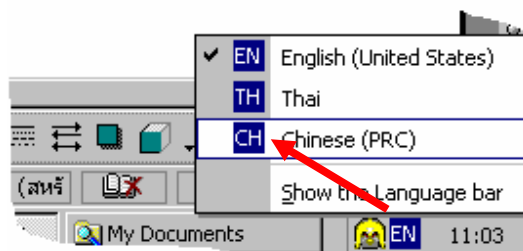


- 2.10 Select “[Chinese \(PRC\)](#)” item. I think that PRC is “People’s Republic of China”.....Something like that. 555555
- 2.11 And then select “[Chinese Simplified – MS-PinYin98](#)” option.
- 2.12 Then set you favorite hot key for each language input,like the below details.

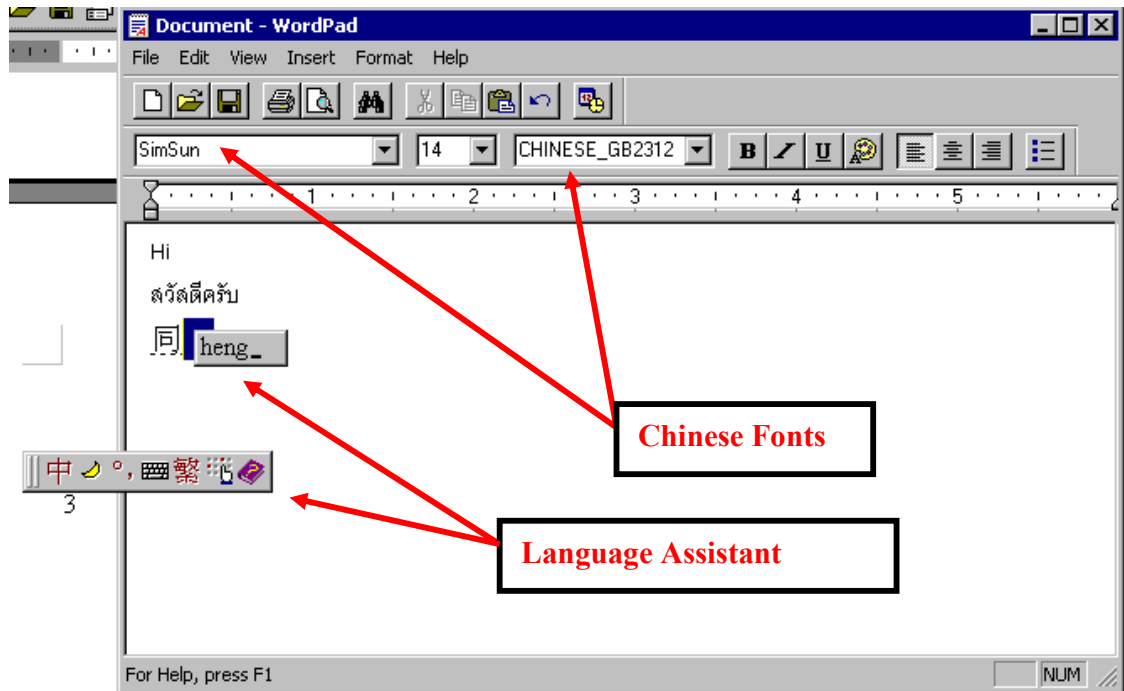


2.13 And then press “OK” button...till all of Windows are closed..

2.14 Click on Task bar at the right hand side. You will see the additional Chinese language taking place.



2.15 Open any text application such as [Microsoft Word](#), [Notepad](#), or [WordPAD](#) for testing the new language setup.



If you have other questions, please feel free to inform me instantly at all time you need.

Best wishes for you,

王开法.

Wang Kai Fa (DID)